



echelon health

caring for your most valuable asset



**We are fundamentally different....**

## **Who we are**

Established at the heart of Harley Street with the sole purpose of saving lives through early detection, we bring together 30 years of clinical expertise, the most advanced imaging technology and unparalleled client service to offer some of the world's leading health assessments available today.

## **Our world-renowned specialists**

Our scans and images are reviewed by up to seven of the most renowned radiologists in the country, all drawn from prestigious London teaching hospitals - as a client of Echelon Health, you can be completely confident in the accuracy of your results every time.

## **Medical Advisory Committee**

Echelon Health is committed to practicing the very highest clinical standards; we draw upon the expertise of our Medical Advisory Committee which is comprised of consultants who are leaders within their field. Our Medical Advisory Committee guides us on best clinical practice and helps ensure we maintain our excellence in patient care and safety.

## **Rapid onward referral**

You can be reassured that if anything untoward is detected, Echelon Health offer an array of options for next steps. If you wish, your results can be shared with your GP, preferred consultant or health insurance. Alternatively, we can offer complimentary referral to our recommended specialists.



## View from an industry leading expert

“Clients can be reassured that Echelon are providing not only an expert high quality package but are continually questioning and refining the process...The service they are providing at present is, in my opinion, the best that can be achieved in current practice with existing knowledge.”


**Dr David J. Wilson, MBBS BSc MFSEM FBIR FRCP FRCR**  
**Past President, British Institute of Radiology**



## Not all scanners are the same

We recognise that no single scanner is sufficient in assessing the entirety of the body for causes of premature death. A combination of modalities is essential to determine the most accurate results; that is why we utilise **all** the core imaging modalities - CT (Computed Tomography), MRI (Magnetic Resonance Imaging) ultrasound and mammography.

When it comes to the health of our clients, we only utilise technology that is quite simply the best: Our 3T MRI scanner and Aquilion One Prism CT scanners are the most advanced scanners in use worldwide, and for the latter the only one currently available in London.



“An exceptional level of service and attention to detail made what could be an intense experience feel very comfortable. The total body evaluation feels like literally no stone is left unturned to ensure a clean bill of health.”

**Sir Ben Ainslie**  
**British Sailor and 4 Times Olympic Gold Medalist**

“A faultless and highly personalised service; all the staff were welcoming and made the whole process as easy and as comfortable as possible.”

**Ole Gunnar Solksjaer, International Footballer and Manager**  
**Manchester United.**

## PLATINUM

If an extensive and fully comprehensive health assessment is what you are looking for, our Platinum Health Assessment is for you. Utilising only the most advanced and cutting-edge scanning technology, combined with the talent of our renowned radiologists and doctors, enables us to detect tumours as small as 1-2mm and subsequently, up to 94% of the causes of preventable death. We believe this is the most advanced health assessments available worldwide today.

# What is included

Medical Questionnaire  
& Pre-Assessment

Blood Tests

ECG

CT Aorta

CT Heart

CT Coronary Angiogram

CT Chest

CT Abdomen

CT Pelvis

CT Virtual Colonoscopy

CT Bone Density

EOS CT Upright Skeleton

MRI Brain

MRI Cerebral Artery Angiogram

MRI Carotid Artery Angiogram

MRI Prostate (Male)

Ultrasound Thyroid

Ultrasound Testes/ Ovaries

Digital Mammogram (Female)

Full Body Mole Screen

Final Consultation





## **GOLD**

Our Gold Health Assessment is for those who want to focus on the core components of the body, similar to those included in the Platinum Health Assessment, but want to put closer emphasis on the areas of the body most likely to pose a greater risk to their health.

# What is included

Medical Questionnaire  
& Pre-Assessment

Blood Tests

ECG

CT Aorta

CT Heart

CT Coronary Angiogram

CT Chest

CT Abdomen

CT Pelvis

CT Virtual Colonoscopy

MRI Prostate (Male)

Ultrasound Testes/ Ovaries

Digital Mammogram (Female)

Final Consultation





## Core Cancer

We created this assessment to detect the highest risk cancers at the earliest possible stage. It screens for cancers such as leukaemia/lymphoma, breast, prostate, colon, pancreatic, liver, thyroid, kidney and adrenal glands, as well as ovaries/testes. Ideal for clients who may have a family history of cancer.

Medical Questionnaire  
& Pre-Assessment

Blood Tests

CT Abdomen

CT Pelvis

CT Virtual Colonoscopy

MRI Prostate (Male)

Ultrasound Thyroid

Ultrasound Testes/ Ovaries

Digital Mammogram (Female)

Final Consultation





# Healthy Heart

Ensuring the health of one of our bodies' most vital organs, this assessment, which is completed in under an hour, will provide an unparalleled insight of your heart arteries and risk of coronary heart disease. It is ideal for those who have a family history of heart attack, have cardiac risk factors, or anyone generally concerned about the health of their heart.

Medical Questionnaire

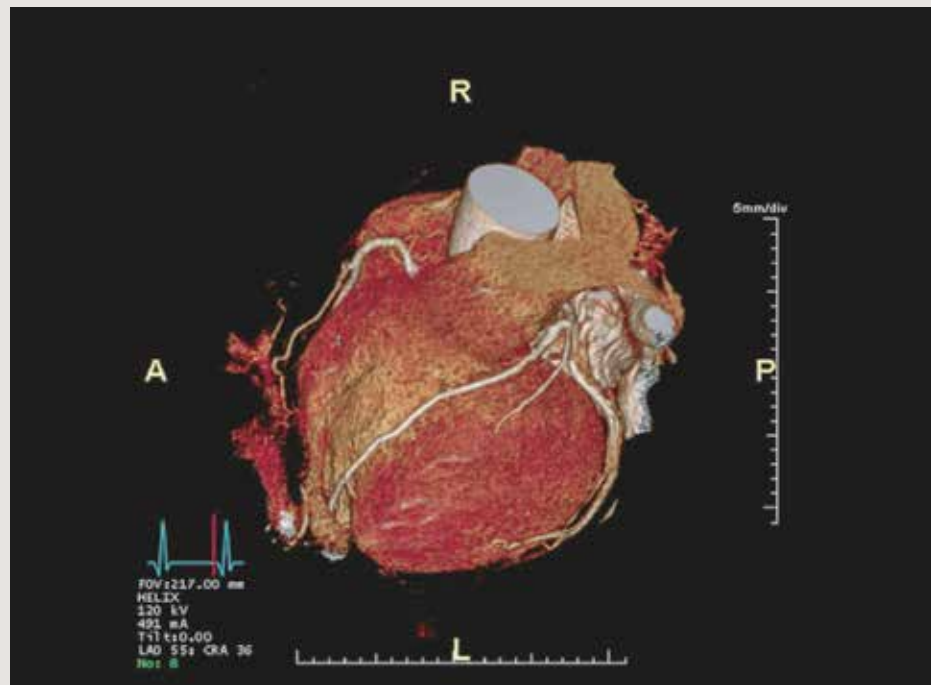
Blood Tests

ECG

CT Heart

CT Coronary Angiogram

Summary of Results



# Bespoke

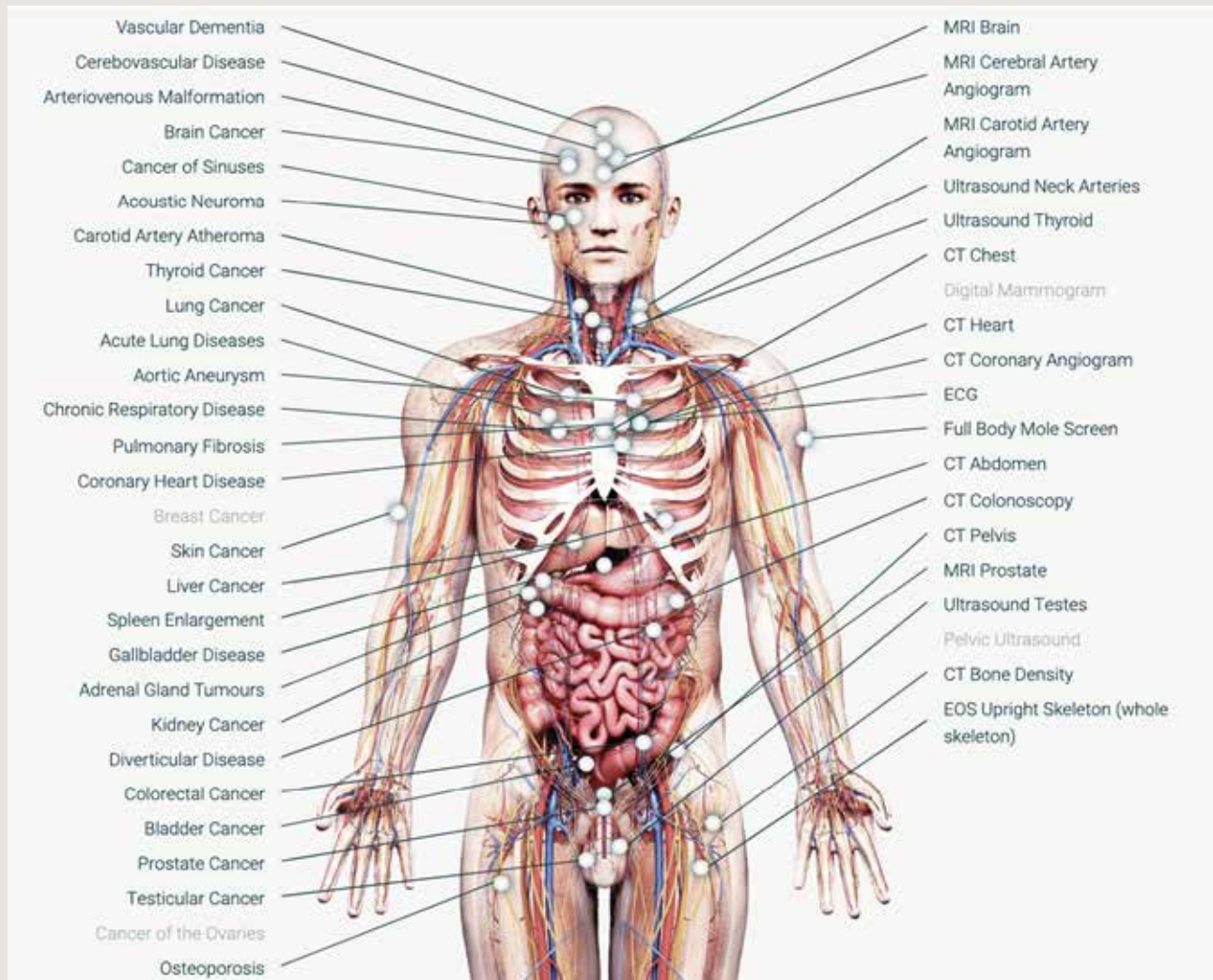
Individually tailored

At Echelon Health, we appreciate each of our client's individuality. We never assume that every client will benefit from our assessments identically. While our health assessment packages are based around the most common areas of concern, supported by the latest medical science to ensure the most effective suite of scans, we understand that some clients may require a bespoke combination of scans spanning across our assessments, or a more targeted approach for specific areas of concern relating to symptoms and/or family history.

Whether that reflects concerns about individual cancers (e.g lung, prostate, breast, colon) or risk of stroke or brain haemorrhage, rest assured that we can offer a complete bespoke service to address individual concerns.

## Scan Undertaken


## Disease



# Evergreen



Designed to work around our clients' busy schedule and as a more cost-effective solution, our Evergreen Membership offers convenience and on-going peace of mind. Arranged as annual assessments over 3 years, our clients will receive not only the scans and assessments that would usually be available with our Platinum package, but also additional annual blood tests, an annual full body mole check and follow up consultations after each set of scans undertaken.



“The bottom line is that I was diagnosed with a large cerebral fistula in my brain, a condition from which I was suffering no symptoms and would have been completely undetectable in a normal medical. Post diagnosis I was rapidly referred to one of the best specialists in the country and operated on a few days later thus avoiding an almost certain catastrophic brain haemorrhage or quite possibly a life ending trauma.

I do hope that others will treat themselves to the full preventative maintenance regime that they and their families deserve.”

**Nick Finegold, CEO, Curation Corp**



## Corporate Services



Through our carefully tailored corporate programme, we are able to bring highly personalised and unparalleled client service to corporate clients, available to companies' executives and senior employees.

“Echelon Health made the process really easy for us in terms of set up and administration. Everyone from Ocado who goes through the Echelon Health programme is still given the same outstanding level of personal attention that any individual client would receive despite it being a corporate programme.”

**Tim Steiner OBE, CEO, Ocado Plc**

	Platinum	Gold	Core Cancer	Healthy Heart	Bespoke	Evergreen
Medical questionnaire	●	●	●	●	●	●
Blood tests	●	●	●	●	●	●
ECG	●	●		●	●	●
CT aorta scan	●	●			●	●
CT heart scan	●	●		●	●	●
CT coronary angiogram	●	●		●	●	●
CT chest scan	●	●			●	●
CT abdomen / pelvis scans	●	●	●		●	●
CT virtual colonoscopy scan	●	●	●		●	●
CT bone density scan	●				●	●
EOS CT upright skeleton scan	●				●	●
MRI brain scan	●				●	●
MRI carotid artery angiogram	●	●			●	●
MRI cerebral artery angiogram	●				●	●
MRI prostate scan (Male)	●				●	●
Ultrasound testes/ ovaries scan	●	●	●		●	●
Ultrasound thyroid scan	●	●	●		●	●
Digital mammogram (Female)	●	●	●		●	●
Full body mole screen	●				●	●
Consultation/Summary of results	●	●	●	●	●	●
<b>MEN</b>	£14,000	£10,000	£6,000	£2,500	*Tailored individually	*£500 + 36 x £375
<b>WOMEN</b>	£13,500	£9,200				

\* Evergreen is a membership payable in monthly installments over three years. An initial payment of £500 will be applicable and then £375 per month for 36 months thereafter.


\* The final price of a Bespoke Assessment depends on which scans you undergo, but can include any of the above scans.



 [@echelon.health](https://www.instagram.com/echelon.health)

 [facebook.com/echelonhealthltd](https://www.facebook.com/echelonhealthltd)

 [@echelonhealth\\_](https://www.twitter.com/echelonhealth_)

 [linkedin.com/company/echelon-health/](https://www.linkedin.com/company/echelon-health/)

**Echelon Health Ltd**  
68 Harley Street  
London W1G 7HE  
+44 (0) 207 580 7688  
+44 (0) 73 75 791713

**info@echelon.health**  
**www.echelon.health**

 **echelon health**  
caring for your most valuable asset